



[www.stephenson-ssc.co.uk](http://www.stephenson-ssc.co.uk)



# Innovative Concrete Solutions

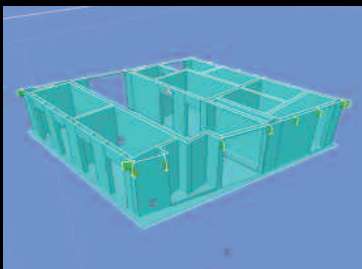
Stephenson was formed in 1962 and over the years has developed a reputation within the industry for integrity, commitment and performance to meet both Contractors' and Clients' requirements.

We are proud to be perceived as one of the most innovative and proactive contractors in our field. We have been at the forefront of pioneering construction techniques and are the first Contractor in this Country to use:

- Outinord Room Forms/Tunnel Forms
- Indumat Hydraulic Tables
- GKN Aluminium Kwikshore as a Flying Table
- Peri Climbing Wall Form Systems
- DOKA Jump Form Walls Systems
- Cordek Trough and Void Formers
- Climbtrac Jumpform Systems
- Recycled Plastic Scaffold Board Systems
- Halfen Cold Bridging Detail to Precast Balconies
- Ischebeck Titan Screen Systems
- Hydraulic Climbtrac Jump Form Systems for Core Construction
- Cobiax Precast Slab Construction
- Self-Compacting Concrete in a Complete Concrete Structure (UK)

The Stephenson Group now encompasses our Reinforced Concrete Frames, Shell & Core and Development divisions along with Specialist Contracting, Plant Hire and Sales. We are continuously involved in development and construction partnering packages with key clients. Our areas of operation cover the entire UK.

We are actively involved with CONSTRUCT in the promotion of safety training and economic and fast track design techniques for the delivery of Concrete Structures.





Stephenson Shell & Core was established in 2006 to provide clients with in-house design and build construction capability which includes reinforced concrete frame, envelope and fit-out packages. We also work as construction and development partners with a number of clients and joint venture companies.



Stephenson Development is a well established private property company who strongly believe in traditional values, quality with innovative and sustainable modern methods of construction.



# Environmental Sustainability

## - forward thinking

At Stephenson we are always monitoring the impact our works have on the environment and are constantly working towards ways of reducing our Carbon Footprint. We engage with all our staff to ensure that our practices both on site and in our offices adhere to our environmental policies.

Our procurement team ensure that all our materials such as plywood and timber is sourced from approved FSC/PEFC suppliers. We are always looking to source alternative solutions such as plastics and, within our concrete designs, recycled aggregates and cement replacements. This, combined with our waste management programme, ensures that the entire Stephenson Group understand the importance of creating and maintaining practices for our future environmental legacy.

## Award Winning Solutions

As a company Stephenson are constantly promoting efficiencies from within and looking to innovate and revolutionise the Reinforced Concrete Frame industry with new techniques and methods.

With a large geographical coverage and an ever expanding client base, Stephenson cover a variety of sectors including Education, Commercial, Medical, Residential, Student Accommodation, Leisure and Civils.

We are proud to be recognised for our achievements.



# Health & Safety

Stephenson puts Health & Safety at the top of its agenda and, being at the forefront of RC Frame construction processes, we aim to capture and promote this culture and philosophy within our personnel.

By ensuring that all our staff are fully trained and educated in the practice of Health & Safety, Stephenson are able to perform at the highest standards by producing quality concrete solutions with managed processes.

These adhere to our 'Think, Work, Live, Safety' ethic to encourage our staff and others to realise the importance of being safe in all situations.



# Training for the future

Over the years, Stephenson Group has led the way by working with the National Construction College, Construction Skills and CONSTRUCT to set up and operate an apprenticeship scheme.

At Stephenson we implement our own training programme for employees and subcontractors, providing the appropriate support and qualification in their chosen occupation. This enables them to be both Health & Safety conscious in all aspects of their future lives.



Think | Work | Live | Safety

## DESIGN

- Full Structural Design - Design Development - Reinforcement Detailing -

## SUBSTRUCTURE

- Piling - Excavation - Temporary Works - Reinforcement - Formwork - Concrete - Drainage - External Works -

## SUPERSTRUCTURE

- Insitu Concrete Frames - Falsework & Formwork - Scaffolding - Screeding - Precast Elements - Structural Steel -

## CONSTRUCTION

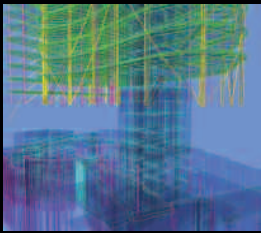
- General Contracting - Shell & Core -

## CONSTRUCTION MANAGEMENT

- Management Services -

## STEPHENSON DEVELOPMENT

- Property Development -



[www.stephenson-ssc.co.uk](http://www.stephenson-ssc.co.uk)

Tel: 01403 217000 Fax: 01403 215750

Provender Mill Mill Bay Lane Horsham West Sussex RH12 1SS

**Bridgend** | Wales

**Horsham** | England