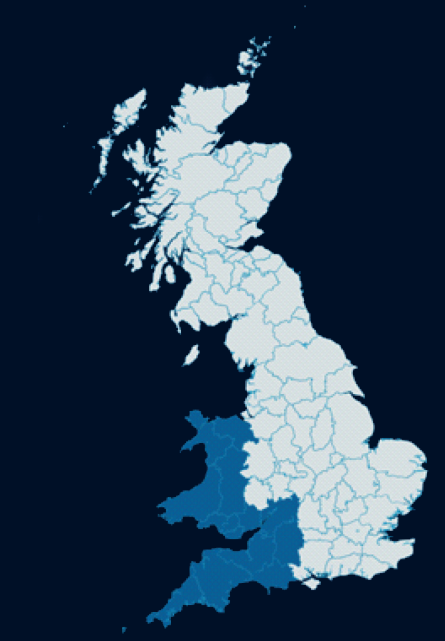




# STEPHENSON CONSTRUCTION REGIONAL PROFILE WALES & WEST



[www.stephenson-group.co.uk](http://www.stephenson-group.co.uk)

**Stephenson** was formed in 1962 and over the years has developed a reputation within the industry for integrity, commitment and performance meeting with Contractor's and client's requirements.

The **Stephenson Group** now encompasses Reinforced Concrete Frames, Shell & Core and Development Divisions along with Specialist Contracting, Plant Hire and Sales. We are actively involved in development and construction partnering packages with key clients.

**Stephenson's experience** extends to every reinforced concrete frame and RC Hybrid frame solution available in the market today.

Along with the development and use of formwork and falsework systems, Stephenson continue to research emerging reinforced concrete frame concepts, and the company is actively involved through 'CONSTRUCT' in the promotion of economic and fast track design and construction techniques.

Stephenson RC Frames are currently active throughout the UK in the following **market sectors**;

- Hotels
- Student Accommodation
- Medical
- Education
- Residential
- Build to Rent
- Private Residential
- Commercial

Our **areas of operation** encompasses all the UK, with the Head Office in Horsham, West Sussex and regional offices in Wales & Scotland.

#### **Head Office**

M R Stephenson Ltd  
Provender Mill  
Mill Bay Lane  
Horsham  
West Sussex  
RH12 1SS

**T:** +44 1403 217000

**E:** [info@stephenson-group.co.uk](mailto:info@stephenson-group.co.uk)

# Our Services

## Design

- Full Structural Design
- Design Development
- Reinforced Detailing

## Substructure

- Piling
- Excavation
- Temporary Works
- Reinforcement
- Formwork
- Concrete Drainage
- External Works

## Construction

- General Contracting
- Shell & Core
- Development and Project
- Management Services

## Construction Management

- Management Services

## Superstructure

- Enabling Works
- Falsework & Formwork
- Hybrid Solutions
- In-situ Concrete Frames
- Scaffolding
- Screeding
- Precast Elements
- Structural Steel

## Stephenson Developments

- Residential
- Student
- Retirement
- Commercial
- Private Rental Schemes

# Current and Selection of Completed Projects

## Harbour Arch Quay, Plymouth

Residential

Client	Sutton Harbour Group
Main Contractor	Moor Manage Ltd
Architect	ADG
Engineer	Airey & Coles

A 10 storey reinforced concrete frame, including concrete foundations, slipform core and crane to provide Sutton Harbour with 14 highly specified 3,4 & 5 bedroom apartments and commercial ground floor.



## Hendy House, Bournemouth

Student Accommodation

Client	Victoria Halls
Main Contractor	Shore Construction
Architect	Stride Treglown
Engineer	Ramboll

A 7 storey student accommodation block providing Bournemouth students with 213 beds, a gym and additional community areas. Our scope of works includes the piling mat, piling attendance, groundworks, drainage and 7 storey reinforced concrete frame.



## BRI Student Accommodation, Bristol

Student Accommodation

Client	Unite Students
Main Contractor	RG Group
Architect	DMWR
Engineer	Tier Consult

Enabling works, bulk excavation, foundations and ground floor slab, drainage and waterproof membranes. Ranging 4 to 6 floors plus roof.



# Current and Selection of Completed Projects

## The Royal Bournemouth Hospital

<b>Client</b>	Dorset University Hospitals NHS Foundation Trust
<b>Main Contractor</b>	IHP
<b>Architect</b>	IBI Group (UK) Ltd
<b>Engineer</b>	Curtains Consulting Ltd

Part of the BEACH Building's construction to provide a new maternity, children's, critical care unit and enhanced emergency department, Stephenson's scope of works include the groundworks and reinforced concrete frame.



## Castlepoint Car Park, Bournemouth

Car Park

<b>Client</b>	Castlepoint General
<b>Main Contractor</b>	Kier Central
<b>Architect</b>	Stride Treglown
<b>Engineer</b>	Ramboll

Our scope of works include the erection of structural steel-work, followed by the instillation of precast concrete units and in-situ concrete. Temporary supports will be installed during the erection process. The surfacing and finished will then be applied to complete the building.



## Bristol Beacon

Commercial

<b>Client</b>	Bristol City Council
<b>Main Contractor</b>	Willmott Dixon
<b>Architect</b>	Arup
<b>Engineer</b>	Arup

Bristol Beacon opened as a concert venue in 1867 and became one of the most important rock music venues in Britain. Stephenson undertook the refurbishment to the stage area.



# Current and Selection of Completed Projects

## The Chocolate Factory, Bristol

Residential

<b>Client</b>	Generator (Chocolate Factory) LLP
<b>Main Contractor</b>	Sweet Construction
<b>Architect</b>	519 Architecture
<b>Engineer</b>	Hydrock

5 storey reinforced concrete frame with a traditional core. This project aimed to regenerate a derelict site into a vibrant part of the community within Greenbank, Bristol.



## Premier Inn, Torquay

Hotel

<b>Client</b>	Whitbread PLC
<b>Main Contractor</b>	Midas Construction
<b>Architect</b>	Narracotts Architects
<b>Engineer</b>	Hydrock

120 bed, 6 storey reinforced concrete frame with 4 traditional cores, 1 containing a triple lift shaft. The car-park reinstatement involves an additional stair core, plus 2 suspended slabs being tied into the existing structure.



## The Gym, Bridgend Police Station

Services

<b>Client</b>	South Wales Police
<b>Main Contractor</b>	Willmott Dixon
<b>Architect</b>	519 Architecture
<b>Engineer</b>	Train & Kemp Engineering Business Solutions

SWP has one of the largest estates within the blue light sector across the UK. This project provides a 2 storey physical training facility housing 2 large training suites for beep tests, taser training, self defense classes, changing rooms and classrooms.



# Current and Selection of Completed Projects

## Factory 1, Bristol

Residential

Client	City & Country
Main Contractor	City & Country
Architect	Purcell
Engineer	Hyrock

5 individual blocks, approximately 5 storeys high and a podium level slab commencing from ground floor level.



## Bath Road, Totterdown, Bristol

Private Residential

Client	Clarion Housing
Main Contractor	Mid Group (West) Ltd
Architect	Lewis & Hickley
Engineer	Buro Happold Engineering

By creating one of the biggest shared ownership schemes in Bristol, this project delivered a mixture of 1, 2 and 3 bedroom apartments along with 3 commercial units and underground parking. The project included 2 suspended slabs and podium slab.



## The Hub, Swindon

Private Residential / Community Centre

Client	Nationwide Building Society
Main Contractor	Mi Space UK
Architect	Metropolitan Workshop / PRP Collaboration Architects
Engineer	Craddy Pitchers Ltd

This project included a 4 storey reinforced concrete frame that forms part of a new neighborhood with community at its roots.



# Current and Selection of Completed Projects

## Corbyn Hotel, Torquay

Hotel

Client	Fragrance UK
Main Contractor	Willmott Dixon
Architect	Kay Elliot Architects
Engineer	Aiery & Coles

A 170 bed, 4 storey hotel with 60% of rooms having a sea view. This project also included a rooftop bar and spa.



## South Wales Police HQ, Learning Centre, Bridgend

Public Sector / Services

Client	South Wales Police
Main Contractor	Willmott Dixon
Architect	Mason
Engineer	Bingham Hall Partnerships Ltd

This project for South Wales Police is a 4 storey reinforced concrete frame, which will provide a permanent base for learning & development services, human resources and accommodate an office facility for the police and crime commissioner.



## RUHT CSDP Phase 2, Treliske Hospital

Medical

Client	Royal Cornwall Hospital NHS Trust
Main Contractor	BAM Construction
Architect	Stride Treglown
Engineer	Arup

Ground bearing slab and walls to form a basement followed by 3 suspended floors above.





# Current and Selection of Completed Projects

## Penryn, Cornwall

Student Accommodation & Retail

Client	Studytel
Main Contractor	Caledonian Modular
Architect	Stride Treglown
Engineer	Ramboll

Groundworks, drainage & 2-storey reinforced concrete frame including a podium slab to receive modular student accommodation construction and Y-shape columns from foundation to 1<sup>st</sup> floor.



## Bedminster Road, Bristol

Residential

Client	Solon Housing
Main Contractor	E G Carter
Architect	Noma
Engineer	SWJ Engineers

Ground floor and suspended podium slab providing 29 brand new 1, 2 and 3 bedroom affordable properties for rent.



## ND 6&7, Bristol

Residential

Client	Legal & General
Main Contractor	Galliford Try
Architect	Assael Architecture
Engineer	Aecom

2, 11 storey reinforced concrete frame blocks including groundworks and drainage, providing 376 private residential homes in the centre of the city.



# Current and Selection of Completed Projects

## Glassfields, Bristol

Commercial

<b>Client</b>	Royal London Asset Managers
<b>Main Contractor</b>	Kier
<b>Architect</b>	AWW
<b>Engineer</b>	Buro Happold Engineers

Glassfield's buildings A, B and C are 5, 6 and 9 storeys respectively. Designed as reinforced concrete flat slab construction, the buildings are also linked by a single-storey basement which contains a car park and amenity areas.

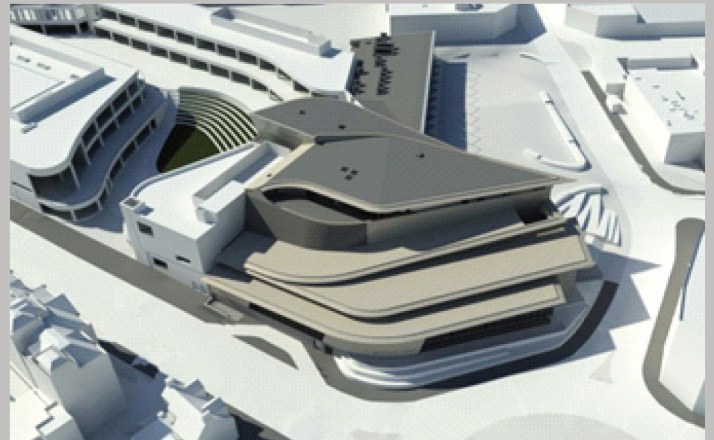


## St Sidwells, Exeter

Commercial

<b>Client</b>	Solon Housing
<b>Main Contractor</b>	E G Carter
<b>Architect</b>	Assael Architecture
<b>Engineer</b>	Aercom

The first "Passivhaus" Leisure Centre in the UK, containing 3 swimming pools and leisure centre facilities. Stephenson completed the reinforced concrete frame and reinforced concrete site works.



## Aquila, Bath

Student Accommodation

<b>Client</b>	Eagle One Properties
<b>Main Contractor</b>	Spellar Metcalfe
<b>Architect</b>	Stride Treglown
<b>Engineer</b>	Fairhurst

4 storey, 204 bed student accommodation project in Bath, including a Stairmaster permanent stair formwork system.



# Current and Selection of Completed Projects

## Premier Inn, Cardiff

Hotel

Client	Barola Properties
Main Contractor	WRW
Architect	Lawray Architects
Engineer	Shear Design Ltd

A 248 bed, 20 storey Premier Inn Hotel constructed using a slipform core method, reinforced concrete slabs and stairmaster system including temporary handrails. The proximity to the railway meant that a rapid EPS double height system had to be implemented.



## Blackberry Hill, Bristol

Residential

Client	Blackberry Hill LLP
Main Contractor	Galliford Try
Architect	Stride Trglown
Engineer	Jubb

3 storey reinforced concrete frame forming part of the 346 residential development on the former Blackberry Hill Hospital site.



## Dean Street, Bristol

Student Accommodation

Client	Studio Hive Atlas
Main Contractor	WRW
Architect	Angus Meek Architects
Engineer	Hydrock

4 storey reinforced concrete frame providing a contemporary purpose built student accommodation block containing 225 student bedrooms and a mixture of studio and cluster flats.



# Current and Selection of Completed Projects

## Middlemoor Police Quarters

Custodial

<b>Client</b>	Office of Police & Crime Commissioners
<b>Main Contractor</b>	Willmott Dixon
<b>Architect</b>	Corstophine & Wright
<b>Engineer</b>	Aecom

3 storey reinforced concrete frame creating a flexible space for 21<sup>st</sup> century policing. The county operational headquarters will be the base for up to 450 officers, whose duties range from community policing to major crime investigation.



## Berkley Magnox

Commercial

<b>Client</b>	Magnox Ltd
<b>Main Contractor</b>	G Works
<b>Architect</b>	N/A
<b>Engineer</b>	NSg Environmental

400mm reinforced concrete slab on top of an existing raft slab as well as 600mm thick concrete walls.



## SERSF 2&3, Falmouth

Education

<b>Client</b>	University of Falmouth
<b>Main Contractor</b>	Kier
<b>Architect</b>	Stride Treglown
<b>Engineer</b>	Aiery & Coles

Science and Engineering Research Support Facility (SERSF) is bringing pioneering business, science and engineering together at the Penryn Campus.



# Current and Selection of Completed Projects

## Plot 6&7, Cardiff

Commercial

Client	Rightacres
Main Contractor	Sir Robert McAlpine
Architect	Gensler
Engineer	Arup

2, 12 storey slipform cores constructed through winter using hot water concrete, a single suspended slab and ramp followed by 11 storeys of concrete topping.



## The Helm, Bournemouth

Student Accommodation

Client	Newmark Developments
Main Contractor	Watkin Jones
Architect	Manson Architects
Engineer	Arup

At 180ft, the 18 storey development now known as The Helm, is the tallest building in Bournemouth. It comprises 159 residential units, 2,800<sup>2</sup>ft of retail space and 37,000<sup>2</sup>ft of grade A office and underground car parking.

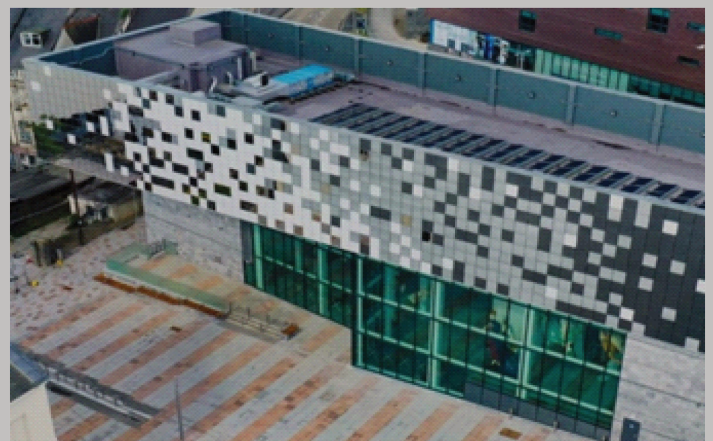


## Plymouth Museum

Commercial

Client	Plymouth City Council
Main Contractor	Willmott Dixon
Architect	Atkins Ltd
Engineer	Atkins Ltd

As a 5 storey reinforced concrete frame, The Box features 5 permanent galleries, 5 exhibition spaces for local and national touring exhibitions and 6 spaces for specific artist projects. This project won the 2021 Building of the Year Award by Michelmores Property Awards.



# Current and Selection of Completed Projects

## UK Hydrographic Office, Taunton

Commercial

Client	Mace Ltd
Main Contractor	Bam Construction
Architect	AHR Architects
Engineer	Hydrock

Building a 3 storey reinforced concrete frame, Stephenson created 100,671m<sup>2</sup> of high spec flexible office space allowing the room for 700 desks alongside a staff restaurant, gym and meeting facilities.



## The Copper Building, Lakeshore, Bristol

Residential

Client	Legal & General
Main Contractor	Galliford Try
Architect	Assael Architecture
Engineer	Aecom

The Copper Building is a 4 storey building that sits above a 3 storey car park offering views over the lake and 10 acres of landscape. The 136 apartments in Copper Building brings the total number of homes at Lakeshore to 422.



## Hope House, Bath

Residential

Client	Hope House
Main Contractor	JJ Rhatigan
Architect	Nash Partnerships
Engineer	Hydrock

This project included the waterproofing to contig walls, on-sided walls, vertical elements to blocks A, C & D only and a dropped beam suspended slab to block C with 2 suspended slabs to block D.



# Current and Selection of Completed Projects

## Atlantic Academy, Biddeford

Education

<b>Client</b>	Route 39 Academy Trust
<b>Main Contractor</b>	Willmott Dixon
<b>Architect</b>	AHR Architects
<b>Engineer</b>	Hydrock

Stephenson constructed a first floor slab, 2500m<sup>2</sup> in area, for a new sustainable free school for North Devon. The project also included all columns and walls to core.



## Midland Road, Bath

Student Accommodation

<b>Client</b>	Watkin Jones
<b>Main Contractor</b>	Watkin Jones
<b>Architect</b>	Stride Treglown
<b>Engineer</b>	Jubb

94 student beds and 14 keyworker studios across a 4 storey reinforced concrete frame including the installation of a radon gas membrane throughout.



## Redcliff Quarter Phase 1, Bristol

Residential

<b>Client</b>	Galliford Try
<b>Main Contractor</b>	Galliford Try
<b>Architect</b>	Lyons & Sleeman & Hoare Ltd
<b>Engineer</b>	Arup

The redevelopment of 25 Redcliff Street / 14 & 14a St. Thomas Street in Redcliff, Bristol: located close to the historic city centre and within the Redcliff Conservation Area. Sampson Court is a major development comprising of 127 apartments with commercial spaces at ground floor level.



# Current and Selection of Completed Projects

## New Research Facility Building, Sequani, Lebury

Commercial / Medical

<b>Client</b>	Sequani Ltd
<b>Main Contractor</b>	Spellar Metcalfe Ltd
<b>Architect</b>	Intelligence Buildings Infrastructure
<b>Engineer</b>	Michael Hadi Associates Ltd

This project includes the erection of a brand new 3 storey, 2,104m<sup>2</sup>, Class B1 employment building to be used for Biomedical Research.



## Ashton Vale-Temple Meads, Bristol Metrobus

Civil

<b>Client</b>	West of England - Travel
<b>Main Contractor</b>	Balfour Beatty Civil Engineering Ltd
<b>Architect</b>	Bristol City Council
<b>Engineer</b>	Parsons Brinkerhoff

Stephenson Undertook 3 concrete bridges along this route. Part of the route will be constructed as a fully guided bus-way, part dedicated with the driver in control and part will merge onto the existing road network.



## BGH09, 10 & 11, The General, Bristol

Car Park & Residential

<b>Client</b>	City & Country Group
<b>Main Contractor</b>	City & Country Group
<b>Architect</b>	Feilden Clegg Bradley Studios
<b>Engineer</b>	Hydrock

3 blocks of reinforced concrete frame, ranging from 3 to 9 storeys, providing 202 residential units, a car park and commercial space.





# Current and Selection of Completed Projects

## Interim Storage Facility (ISF), Hinkley Point A

Client	Magnox
Main Contractor	G Works Construction Ltd
Architect	Magnox
Engineer	Arup / Cara Reinforcement

During the decommissioning process at the Hinkley Point A site, a proportion of the ILW waste needs to be managed. The ILW needs to be packaged and stored in ISF's before its eventual disposal at the national Geological Disposal Facility (GDF). 400mm thick concrete slabs and 600mm thick walls assist in this management.



## National College for Nuclear, Cannington

Education

Client	Bridgewater College
Main Contractor	Midas Construction
Architect	Austin Smith Lord
Engineer	Atkins Ltd

This project included forming a ground floor slab and 2 suspended floors and link bridge. The new facilities in Cannington will act as a hub for nuclear training across the South, supporting both civil and defense nuclear industries from new build to decommissioning.



# Current and Selection of Completed Projects

## St. Fagan's Visitor Centre, Cardiff

Education

Client	Amgueddfa Cymru
Main Contractor	Kier
Architect	Feilden Clegg Bradley Studios
Engineer	Arup

A 3 storey traditional reinforced concrete frame has transformed the brand new visitor centre. Through the redevelopment project, public space in the main building has doubled.



## Wards-Ivy Grove, Wycliffe College

Education

Client	Wycliffe College
Main Contractor	E G Carter
Architect	O'Brien & Price
Engineer	Hydrock

This 3 storey traditional reinforced concrete frame has created a mixed-use boarding accommodation which was designed to replace a boys boarding house, integrate a girls boarding house and create additional accommodation to expand flexi-boarding alongside traditional full boarding.



## Some Historical Projects

### Commercial

- New Terminal, Bristol Airport
- Bridgend Rhiw
- Hinkley Point A, NVC Containment
- Redcliff St, Bristol
- Plot 2 Central Sq, Cardiff
- Exeter Rd, Bournemouth
- Brewery Square, Dorchester
- Cheswick Village Centre, Bristol
- HMP Parc Prison, Bridgend
- Wimbourne Rd, Car Park, Bournemouth
- Devonport Police Station
- Southgate Shopping Centre
- St Austell
- Bridgewater Hospital
- North Star, Swindon

### Hotel

- Premier Inn, Swansea
- Future Inns, Bristol
- Premier Inn, Cardiff
- Premier Inn, Torquay

### Student Accommodation

- Beckley Court Plymouth
- Trenchard Street, Bristol
- Barry Magistrates Court
- Crescent, Plymouth
- Leyton Mount, Bournemouth
- Woodland Court, Bristol
- Vita 2, Cardiff

### Residential

- Banks Road Poole
- Aberdare
- Riverside, Falmouth
- Onion Street, Plymouth
- Cardiff Point
- Prospect Place, Cardiff
- Gloucester CCC
- Wine Street, Swansea
- Magistrates Court, Bristol

### Education

- Wycliff College, Gloucester
- Filton High Education, Bristol
- Stem Plymouth
- Ebbw Vale
- Rednoch, Gloucester
- Bridgend Police Training Centre

### Medical

- Southmead Hospital, Bristol
- Gloucester Royal Hospital
- Bridgewater Phase 1&2
- Sick Childrens Hospital
- Linac 3 bunker, Truro
- Bath Hospital, RHU Phase 1
- Bridgewater Hospital
- Derriford Hospital