



STEPHENSON CONSTRUCTION REGIONAL PROFILE SCOTLAND



www.stephenson-group.co.uk

Stephenson was formed in 1962 and over the years has developed a reputation within the industry for integrity, commitment and performance meeting with Contractor's and client's requirements.

The **Stephenson Group** now encompasses Reinforced Concrete Frames, Shell & Core and Development Divisions along with Specialist Contracting, Plant Hire and Sales. We are actively involved in development and construction partnering packages with key clients.

Stephenson's experience extends to every reinforced concrete frame and RC Hybrid frame solution available in the market today.

Along with the development and use of formwork and falsework systems, Stephenson continue to research emerging reinforced concrete frame concepts, and the company is actively involved through 'CONSTRUCT' in the promotion of economic and fast track design and construction techniques.

Stephenson RC Frames are currently active throughout the UK in the following **market sectors**;

- Hotels
- Student Accommodation
- Medical
- Education
- Residential
- Build to Rent
- Private Residential
- Commercial

Our **areas of operation** encompasses all the UK, with the Head Office in Horsham, West Sussex and regional offices in Wales & Scotland.

Head Office

M R Stephenson Ltd
Provender Mill
Mill Bay Lane
Horsham
West Sussex
RH12 1SS

T: +44 1403 217 000

E: info@stephenson-group.co.uk

Our Services

Design

- Full Structural Design
- Design Development
- Reinforced Detailing

Substructure

- Piling
- Excavation
- Temporary Works
- Reinforcement
- Formwork
- Concrete Drainage
- External Works

Construction

- General Contracting
- Shell & Core
- Development and Project
- Management Services

Construction Management

- Management Services

Superstructure

- Enabling Works
- Flasework & Formwork
- Hybrid Solutions
- In-situ Concrete Frames
- Scaffolding
- Screeding
- Precast Elements
- Structural Steel

Stephenson Developments

- Residential
- Student
- Retirement
- Commercial
- Private Rental Schemes

Current and Selection of Completed Projects

Greenmarket, Dundee

Client	Glencairn Properties
Main Contractor	Ogilvie Construction
Architect	N/A
Engineer	Will Rudd

Our scope of works for this project include the slipform core to a height of 20 meters, inclusive of cast in plates to receive the steel frame. All lifting is completed by Stephenson with the estimated time on site of approximately 6 weeks.



Baird & Anchor Hospital, Edinburgh

Medical

Client	NHS Graham
Main Contractor	Grahams Construction
Architect	NORR Consultants Ltd
Engineer	Mott McDonalds

Baird - Capping beam, basement slabs, retaining and liner wall and superstructure over 4 suspended levels.

Anchor - Ground floor slab, retaining wall and 1 suspended podium slab.

Both - CDP waterproofing by SSC as well as 4 tower cranes and mobile cranes by SSC.



Montrose Terrace, Edinburgh

Student Accommodation

Client	Glencairn Properties
Main Contractor	Graham Construction
Architect	56three Architects
Engineer	Will Rudd

All mass fill foundations bearing off rock, capping beam to 2 elevations, drainage, attenuation tank, basement, ground floor and suspended ground transfer slab providing 149 student studios and cluster flats.



Current and Selection of Completed Projects

Mayfield Road, Edinburgh

Student Accommodation

Client	Audley Modular Students Living's
Main Contractor	Clark Contracts
Architect	56three Architects
Engineer	Etive Consulting Engineers

Mayfield Road is a modular superstructure student accommodation scheme. Delivering all the works up to and including the podium slab, our main works comprise of 2 phases, both with 2 jump form cores to 4 floors with a suspended podium slab on both phases.



Cathedral Street, Edinburgh

Student Accommodation

Client	CA Ventures
Main Contractor	Watkin Jones
Architect	Corstophine & Wright
Engineer	Tier Consult

A 422 bed student accommodation project in the heart of Glasgow, including both the groundworks and 21 storey reinforced concrete frame supported by a slipform core.



New Waverly, Edinburgh

Private Residential

Client	Cruden Homes East
Main Contractor	Cruden Homes East
Architect	Allan Murray Architects
Engineer	Etive Consulting Engineers

A 7 storey reinforced concrete frame with 4 jumpform cores.



Current and Selection of Completed Projects

Institute of Regeneration & Repair Expansion, Edinburgh

Education

Client	University of Edinburgh
Main Contractor	Balfour Beatty
Architect	Stantec Limited
Engineer	Jacobs

A 5 storey frame for the university of Edinburgh - an expansion building off the side of phase 1 of the scheme. Stephenson undertook all the superstructure works and ground floor slab.



Dundee Street, Edinburgh

Student Accommodation

Client	CA Ventures
Main Contractor	Watkin Jones
Architect	GWP Architecture
Engineer	Etive Consulting Engineers

A 225 bed student accommodation in Edinburgh, built over 6 storeys, we completed the full groundworks and reinforced concrete superstructure package. On site for a total of 30 weeks pouring over 3,000m³ of concrete.



Current and Selection of Completed Projects

Stanley Place, Edinburgh

Student Accommodation

Client	CA Ventures
Main Contractor	Clark Contracts
Architect	56three Architects
Engineer	Etive Consulting Engineers

Stanley Place is a 4 storey circa, 102 bed, student accommodation block. We are undertaking the full delivery of the frame including the groundworks, drainage and superstructure. 3 cores are being jumped ahead of the main frame allowing a speedy superstructure cycle. First of what we hope to be many projects with a new and exciting client.

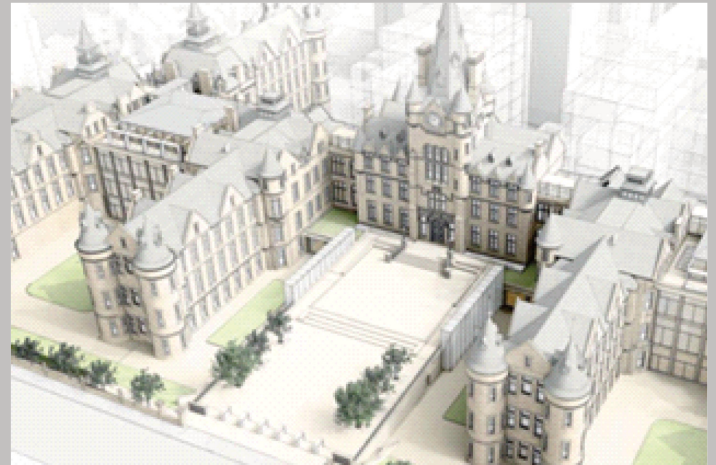


Edinburgh Future Institutes, Phase 2

Education

Client	University of Edinburgh
Main Contractor	Balfour Beatty
Architect	Bennetts Associates
Engineer	Will Rudd Davidson

Back into EFI for phase 2 of our reinforced concrete superstructure package, now delivering the centre piece of the building, the main Event Space. This is a basement presentation space right under the front entrance of the building. All concrete is being delivered to a high architectural finish with columns, walls and soffits all to be left exposed.

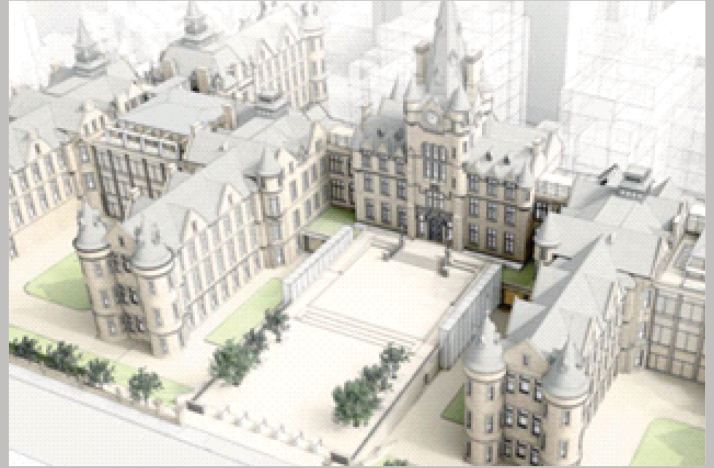


Current and Selection of Completed Projects

Edinburgh Future Institutes

Client	University of Edinburgh
Main Contractor	Balfour Beatty
Architect	Bennetts Associates
Engineer	Will Rudd Davidson

5 primary areas of work which are the North East and West extensions, the South East and West Infill sections and finally, the Event Space to the Northern Entrance. It included columns and suspended slabs to 4 levels with exposed soffits.



Music Centre, St. Andrews

Client	University of St. Andrews
Main Contractor	Graham Construction
Architect	Flanagan Lawrence
Engineer	Will Rudd Davidson

2 separate, 3 storey reinforced concrete frame blocks. This project received a Highly Commended Award at the 2020 Concrete Society Awards.



Kyle Street, Glasgow

Student Accommodation

Client	Watkin Jones
Main Contractor	Watkin Jones
Architect	Fletcher Joseph Associates
Engineer	Etive Consulting Engineers

A 401 bed, student accommodation including groundworks, 9 & 11 storey reinforced concrete frame with 5 jumpform cores.



Current and Selection of Completed Projects

Motel One, Glasgow

Hotel

Client	Motel One
Main Contractor	Ogilvie Construction
Architect	Leach Rhodes Walker
Engineer	Woolgar Hunter

14 suspended floors of post-tensioned slabs with single storey precast columns and 2 cores taken up traditionally. Our scope of works included the reinforced concrete elements of the groundworks, including a ground floor slab and PT slabs above level 14.



Torphic Street, Edinburgh

Hotel

Client	Axcel Hospitality
Main Contractor	Ogilvie Construction
Architect	CDA
Engineer	Quattro

A 150 bed, 9 storey traditional reinforced concrete frame with 2 jumpform cores.

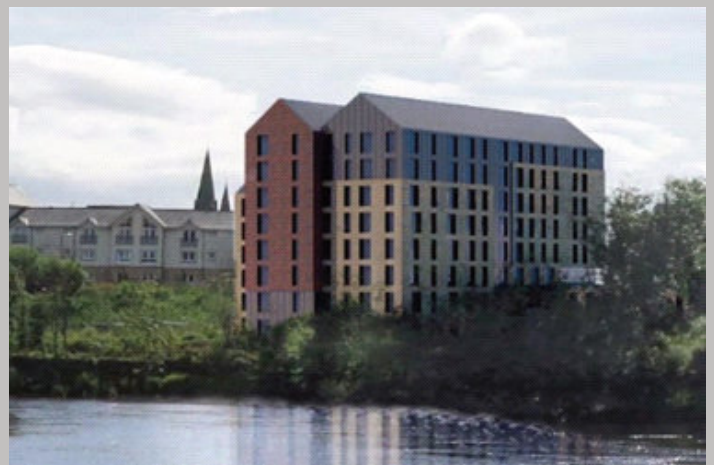


Forthside, Stirling

Student Accommodation

Client	UK PBSA
Main Contractor	Ogilvie Construction
Architect	Susan Stephen Architects
Engineer	Etive Consulting Engineers

A 3 storey traditional reinforced concrete frame to sit a light gauge steel frame building on top which will create a high quality, 207 bed student accommodation with great access to the town an university.



Current and Selection of Completed Projects

Radisson Red, Glasgow

Hotel

Client	Bridgewater College
Main Contractor	Midas Construction
Architect	Austin Smith Lord
Engineer	Atkins Ltd

The 174 bed, 10 storey Radisson Red faces onto the SECC and Hydro Arena. Rooms are situated between the 1st and 8th floors, a bar and roof terrace on the 9th floor and restaurant / bar located on the ground floor.



Prince & Princess of Wales, Glasgow

Medical

Client	Prince & Princess of Wales Hospice
Main Contractor	Balfour Beatty
Architect	Ryder Architecture
Engineer	Woolgar Hunter

A 2 storey reinforced concrete frame and groundworks. This project received a Highly Commended Award in 2019 from the Scottish Design Awards.



Higgs Laboratory

Education

Client	University of Edinburgh
Main Contractor	Graham Construction
Architect	JM Architects
Engineer	Jacobs

The Higgs Centre brings together world-class research in astronomy, particle physics and the instrumentation expertise that underpins it, with business incubation facilities and laboratories suitable for commercial use. This was a 3 storey 'bubbledeck' slab construction.



Current and Selection of Completed Projects

Buccleuch Place, Edinburgh

Student Accommodation

Client	University of Edinburgh
Main Contractor	Graham Construction
Architect	JM Architects Ltd
Engineer	Blyth & Blyth

Buccleuch Place Lane is a property with 136 single en-suite study bedrooms all within flats, each with their own shared kitchen / living area over 2, 5 storey blocks.



Old Dumbarton Road, Glasgow

Student Accommodation

Client	Watkin Jones
Main Contractor	Watkin Jones
Architect	Manson Architects
Engineer	Etive Consulting

These student residences provide 201 bed spaces across 9 storeys for the university of Glasgow.



Firhill Partnership Centre, Edinburgh

Commercial

Client	HUB Scotland
Main Contractor	Graham Construction
Architect	Hoskins Architects
Engineer	Patrick Parsons

The main emphasis on this project was to deliver modern health care facilities with local authority integration to provide co-location of staff and better services for patients and service users across a 2 storey reinforced concrete frames.



Current and Selection of Completed Projects

Lutton Court, Edinburgh

Student Accommodation

Client	Crosslane Student Developments
Main Contractor	Ogilvie Construction
Architect	JM Architects Ltd
Engineer	Patrick Parsons

235 bedroom student accommodation made up of a mixture of cluster bedrooms with shared kitchen facilities and studios with self-contained bedrooms and kitchens over 4 blocks, ranging in heights up to 5 storeys.



Institute of Regeneration & Repair, Edinburgh

Education

Client	University of Edinburgh
Main Contractor	Balfour Beatty
Architect	Stantec Limited
Engineer	Jacobs

Ground floor slab and 4 suspended slabs as well as roof slab. Circular exposed columns to perimeter of the building.



St Mungo's, Glasgow

Student Accommodation

Client	Watkin Jones
Main Contractor	Watkin Jones
Architect	Fletcher Joseph
Engineer	Etive Consulting

This scheme is subdivided into 2 distinct blocks of varying weight flanking a colonnaded shared access space with a 'tower' element emphasizing the corner. The project including groundworks, drainage and frame with slipform cores and circular exposed columns.



Current and Selection of Completed Projects

Dunaskin Street, Glasgow

Student Accommodation

Client	Kingsbridge
Main Contractor	Watkin Jones
Architect	Fletcher Joseph
Engineer	Etive Consulting

Forming 504 student flats over 5 new buildings on the site of the former Scotstoun Flour Mill, this project overlooks the River Kelvin and is on the periphery of the main university campus.



Baxter's Place, Edinburgh

Hotel

Client	Chris Stewart Group
Main Contractor	Interserve
Architect	Delta Simmons
Engineer	Blyth & Blyth

This hotel offers circa 240 bedrooms over 7 floors of post-tensioned concrete frame, including traditional cores and columns.



Pittodrie Street, Aberdeen

Student Accommodation

Client	Newmark Developments
Main Contractor	Robertson Construction
Architect	Mansons
Engineer	Etive Consulting Engineers

2, 5 storey reinforced concrete frames totalling 618 student beds. Operated by Student Roost, these rooms offer stylish, high-quality accommodation and on-site amenities for students from the University of Aberdeen and Robert Gordon University.



Current and Selection of Completed Projects

Springside, Edinburgh

Student Accommodation

Client	Knightsbridge
Main Contractor	Ogilvie Construction
Architect	Capita Symonds Ltd
Engineer	Blyth & Blyth

6 floors of post-tensioned concrete frame with traditional cores and columns including stairs and landings providing 302 student rooms.



Abbey Hill, Edinburgh

Student Accommodation

Client	Watkin Jones
Main Contractor	Watkin Jones
Architect	Mason Architects
Engineer	Blyth & Blyth

The construction of Abbey Hill which provides 450 beds includes a capping beam and one-sided wall, a basement, groundworks, waterproofing, ground floor slab and level 1 podium slab.



Some Historical Projects

Commercial

- Hopetoun Street, Edinburgh

Hotel

- Novotel, Edinburgh
- Motel One, Glasgow
- Marriot Leith, Edinburgh

Student Accommodation

- Holyrood, Edinburgh
- Logie Green, Edinburgh
- Pittordrie Street, Aberdeen
- Meadow Lane, Edinburgh
- Abbey Hill, Edinburgh
- Dunaskin Street, Glasgow
- St. Mongo Street, Glasgow
- Arun House, Fountainbridge, Edinburgh

Medical

- RHSC & DCN, Edinburgh
- NorthWest Partnership, Edinburgh

Residential

- Hopetoun Street, Edinburgh
- East Fettes, Edinburgh
- The Plaza, Glasgow
- St. Andrews
- Corner Site, Edinburgh
- Festival Park, Glasgow
- Brunswick Rd, Edinburgh
- Slateford Rd, Edinburgh
- Forthquarter Park, Edinburgh
- Glasgow Harbour
- Belford Lodge, Edinburgh
- Lomond House, Edinburgh
- Ingram Street, Glasgow
- Kingston Street, Glasgow
- Glasgow Cross, Glasgow
- Salamander Street, Edinburgh
- St. Andrews Square, Edinburgh
- Crowthorn House, Glasgow

Education

- North Glasgow College
- Edinburgh University
- Glasgow University
- St. Andrews College
- Higgs Laboratory