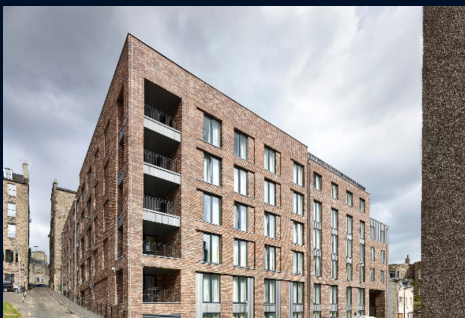




STEPHENSON CONSTRUCTION SECTOR PROFILE HOTELS



www.stephenson-group.co.uk

Stephenson was formed in 1962 and over the years has developed a reputation within the industry for integrity, commitment and performance meeting with Contractor's and client's requirements.

The **Stephenson Group** now encompasses Reinforced Concrete Frames, Shell & Core and Development Divisions along with Specialist Contracting, Plant Hire and Sales. We are actively involved in development and construction partnering packages with key clients.

Stephenson's experience extends to every reinforced concrete frame and RC Hybrid frame solution available in the market today.

Along with the development and use of formwork and falsework systems, Stephenson continue to research emerging reinforced concrete frame concepts, and the company is actively involved through 'CONSTRUCT' in the promotion of economic and fast track design and construction techniques.

Stephenson RC Frames are currently active throughout the UK in the following **market sectors**;

- Hotels
- Student Accommodation
- Medical
- Education
- Residential
- Build to Rent
- Private Residential
- Commercial

Our **areas of operation** encompasses all the UK, with the Head Office in Horsham, West Sussex and regional offices in Wales & Scotland.

Head Office

M R Stephenson Ltd
Provender Mill
Mill Bay Lane
Horsham
West Sussex
RH12 1SS

T: +44 1403 217000

E: info@stephenson-group.co.uk

Our Services

Design

- Full Structural Design
- Design Development
- Reinforced Detailing

Substructure

- Piling
- Excavation
- Temporary Works
- Reinforcement
- Formwork
- Concrete Drainage
- External Works

Construction

- General Contracting
- Shell & Core
- Development and Project
- Management Services

Construction Management

- Management Services

Superstructure

- Enabling Works
- Flasework & Formwork
- Hybrid Solutions
- In-situ Concrete Frames
- Scaffolding
- Screeding
- Precast Elements
- Structural Steel

Stephenson Developments

- Residential
- Student
- Retirement
- Commercial
- Private Rental Schemes

Current and Selection of Completed Projects

The Square, Birmingham

Client	Taylor Grange Developments
Main Contractor	RG Group
Architect	Corstorphine + Wright Architects
Engineer	Design2e

Alongside 440 privately rented 1 & 2 bed apartments, a 231 bed, 8 storey hotel with commercial ground floor. Scope of works include pile attendance, groundworks, drainage and 35 storey reinforced concrete frame across 2 blocks.



Premier Inn, Torquay

Client	Whitbread PLC
Main Contractor	Midas Construction
Architect	Narracotts Architects
Engineer	Hydrock

120 bed, 6 storey reinforced concrete frame with 4 traditional cores, 1 containing a triple lift shaft. The car-park reinstatement involves an additional stair core, plus 2 suspended slabs being tied into the existing structure.



Corbyn Hotel, Torquay

Client	Fragrance UK
Main Contractor	Willmott Dixon
Architect	Kay Elliot Architects
Engineer	Aiery & Coles

A 170 bed, 4 storey hotel with 60% of rooms having a sea view. This project also included a rooftop bar and spa.



Current and Selection of Completed Projects

Premier Inn, Cardiff

Client	Barola Properties
Main Contractor	WRW
Architect	Lawray Architects
Engineer	Shear Design Ltd

A 248 bed, 20 storey Premier Inn Hotel constructed using a slipform core method, reinforced concrete slabs and stairmaster system including temporary handrails. The proximity to the railway meant that a rapid EPS double height system had to be implemented.



Motel One, Glasgow

Client	Motel One
Main Contractor	Ogilvie Construction
Architect	Leach Rhodes Walker
Engineer	Woolgar Hunter

14 suspended floors of post-tensioned slabs with single storey precast columns and 2 cores taken up traditionally. Our scope of works included the reinforced concrete elements of the groundworks, including a ground floor slab and PT slabs above level 14.



Torphicen Street, Edinburgh

Hotel

Client	Axcel Hospitality
Main Contractor	Ogilvie Construction
Architect	CDA
Engineer	Quattro

A 150 bed, 9 storey traditional reinforced concrete frame with 2 jumpform cores.



Current and Selection of Completed Projects

Radisson Red, Glasgow

Client	Bridgewater College
Main Contractor	Midas Construction
Architect	Austin Smith Lord
Engineer	Atkins Ltd

The 174 bed, 10 storey Radisson Red faces onto the SECC and Hydro Arena. Rooms are situated between the 1st and 8th floors, a bar and roof terrace on the 9th floor and restaurant / bar located on the ground floor.



Baxter's Place, Edinburgh

Client	Chris Stewart Group
Main Contractor	Interserve
Architect	Delta Simmons
Engineer	Blyth & Blyth

This hotel offers circa 240 bedrooms over 7 floors of post-tensioned concrete frame, including traditional cores and columns.



Some Historical Projects

- Halkin Hotel, Belgravia, London
- Aurora Hotel, Heathrow
- Sheraton Hotel, Heathrow
- Hilton Hotel, Gatwick
- Ibis Hotel, Euston
- Butlins Ocean Hotel, Bognor Regis
- Butlins Resort Hotel, Bognor Regis
- Hunters Square Ibis Hotel, Edinburgh
- Marriot Leith, Edinburgh
- Novotel Hotel, Edinburgh
- Novotel Hotel, Marylebone
- SA1 Hotel, Swansea
- Furture Inns, Cabot Circus, Bristol