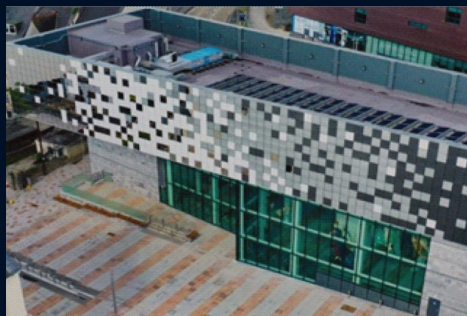




STEPHENSON CONSTRUCTION SECTOR PROFILE COMMERCIAL



www.stephenson-group.co.uk

Stephenson was formed in 1962 and over the years has developed a reputation within the industry for integrity, commitment and performance meeting with Contractor's and client's requirements.

The **Stephenson Group** now encompasses Reinforced Concrete Frames, Shell & Core and Development Divisions along with Specialist Contracting, Plant Hire and Sales. We are actively involved in development and construction partnering packages with key clients.

Stephenson's experience extends to every reinforced concrete frame and RC Hybrid frame solution available in the market today.

Along with the development and use of formwork and falsework systems, Stephenson continue to research emerging reinforced concrete frame concepts, and the company is actively involved through 'CONSTRUCT' in the promotion of economic and fast track design and construction techniques.

Stephenson RC Frames are currently active throughout the UK in the following **market sectors**;

- Hotels
- Student Accommodation
- Medical
- Education
- Residential
- Build to Rent
- Private Residential
- Commercial

Our **areas of operation** encompasses all the UK, with the Head Office in Horsham, West Sussex and regional offices in Wales & Scotland.

Head Office
M R Stephenson Ltd
Provender Mill
Mill Bay Lane
Horsham
West Sussex
RH12 1SS

T: +44 1403 217 000
E: info@stephenson-group.co.uk

Design

- Full Structural Design
- Design Development
- Reinforced Detailing

Substructure

- Piling
- Excavation
- Temporary Works
- Reinforcement
- Formwork
- Concrete Drainage
- External Works

Construction

- General Contracting
- Shell & Core
- Development and Project
- Management Services

Construction Management

- Management Services

Superstructure

- Enabling Works
- Falsework & Formwork
- Hybrid Solutions
- In-situ Concrete Frames
- Scaffolding
- Screeding
- Precast Elements
- Structural Steel

Stephenson Developments

- Residential
- Student
- Retirement
- Commercial
- Private Rental Schemes

Current and Selection of Completed Projects

Interchange Building, Cardiff

Client	ISG Construction Ltd
Main Contractor	ISG Construction Ltd
Architect	
Engineer	Arup

A short yet key construction project to the Interchnage Building in Cardiff will see Stephenson provide 6 circular column encasements, all of 700mm to the bus station area.



Pilgrim Quarter, Newcastle

Client	Reuben Brothers
Main Contractor	Bowmer & Kirkland
Architect	Ryder
Engineer	Cundall

This exciting new commercial project in Newcastle will see Stephenson construct 4 core bases and superstructure slipform cores ranging from 7 to 10 storeys in height. Estimated works to be complete by June 2023.



Greenmarket, Dundee

Client	Glencairn Properties
Main Contractor	Ogilvie Construction
Architect	N/A
Engineer	Will Rudd

Our scope of works for this project include the slipform core to a height of 20 meters, inclusive of cast in plates to receive the steel frame. All lifting is completed by Stephenson with the estimated time on site of approximately 6 weeks.



Current and Selection of Completed Projects

Castlepoint Car Park, Bournemouth

Client	Castlepoint General
Main Contractor	Kier Central
Architect	Stride Treglown
Engineer	Ramboll

Our scope of works include the erection of structural steel-work, followed by the instillation of precast concrete units and in-situ concrete. Temporary supports will be installed during the erection process. The surfacing and finished will then be applied to complete the building.



Bristol Beacon

Client	Bristol City Council
Main Contractor	Willmott Dixon
Architect	Arup
Engineer	Arup

Bristol Beacon opened as a concert venue in 1867 and became one of the most important rock music venues in Britain. Stephenson undertook the refurbishment to the stage area.



Berkley Magnox

Client	Magnox Ltd
Main Contractor	G Works
Architect	N/A
Engineer	NSg Environmental

400mm reinforced concrete slab on top of an existing raft slab as well as 600mm thick concrete walls.

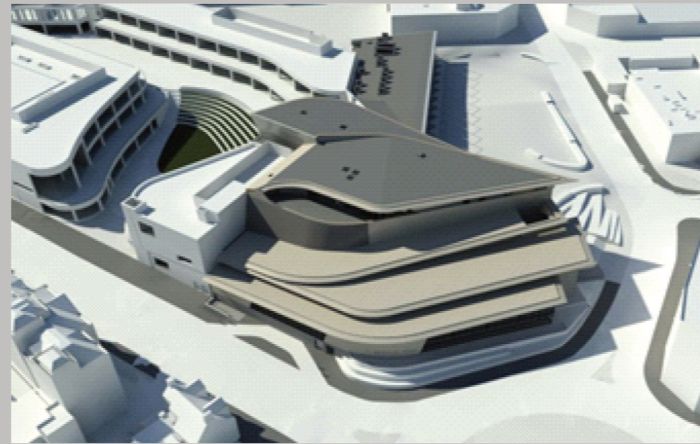


Current and Selection of Completed Projects

St Sidwells, Exeter

Client	Solon Housing
Main Contractor	E G Carter
Architect	Assael Architecture
Engineer	Aercom

The first "Passivhaus" Leisure Centre in the UK, containing 3 swimming pools and leisure centre facilities. Stephenson completed the reinforced concrete frame and reinforced concrete site works.



Glassfields, Bristol

Client	Royal London Asset Managers
Main Contractor	Kier
Architect	AWW
Engineer	Buro Happold Engineers

Glassfield's buildings A, B and C are 5, 6 and 9 storeys respectively. Designed as reinforced concrete flat slab construction, the buildings are also linked by a single-storey basement which contains a car park and amenity areas.



Plot 6&7, Cardiff

Client	Rightacres
Main Contractor	Sir Robert McAlpine
Architect	Gensler
Engineer	Arup

2, 12 storey slipform cores constructed through winter using hot water concrete, a single suspended slab and ramp followed by 11 storeys of concrete topping.

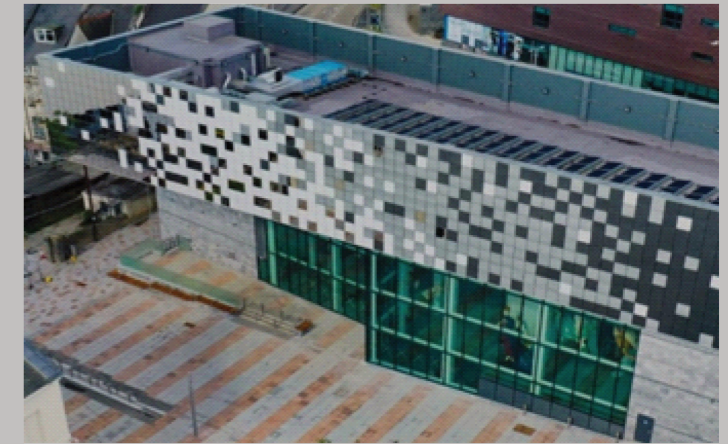


Current and Selection of Completed Projects

Plymouth Museum

Client	Plymouth City Council
Main Contractor	Willmott Dixon
Architect	Atkins Ltd
Engineer	Atkins Ltd

As a 5 storey reinforced concrete frame, The Box features 5 permanent galleries, 5 exhibition spaces for local and national touring exhibitions and 6 spaces for specific artist projects. This project won the 2021 Building of the Year Award by Michelmores Property Awards.



UK Hydrographic Office, Taunton

Client	Mace Ltd
Main Contractor	Bam Construction
Architect	AHR Architects
Engineer	Hydrock

Building a 3 storey reinforced concrete frame, Stephenson created 100,671m² of high spec flexible office space allowing the room for 700 desks alongside a staff restaurant, gym and meeting facilities.



New Research Facility Building, Sequani, Lebury

Client	Sequani Ltd
Main Contractor	Spellar Metcalfe Ltd
Architect	Intelligence Buildings Infrastructure
Engineer	Michael Hadi Associates Ltd

This project includes the erection of a brand new 3 storey, 2,104m², Class B1 employment building to be used for Biomedical Research.



Current and Selection of Completed Projects

Firhill Partnership Centre, Edinburgh

Client	HUB Scotland
Main Contractor	Graham Construction
Architect	Hoskins Architects
Engineer	Patrick Parsons

The main emphasis on this project was to deliver modern health care facilities with local authority integration to provide co-location of staff and better services for patients and service users across a 2 storey reinforced concrete frames.



GLA Building, London

Client	Greater London Authority
Main Contractor	Geoffrey Osbourne
Architect	Foster & Partners
Engineer	Arup

2000m³ raft slab poured monolithically, considered the largest monolithic pours of it's time followed by an innovated DOKA core system, precast stairs and a steel frame erected by others. Concrete toppings by Stephenson where we then continued with the auditorium area using sacrificial Cordek formwork.



Some Historical Projects

- Lambeth Council Offices, St. George's Warf
- Swan Walk, Horsham Town Centre and Car Park
- Gavesend Town Centre and Car Park
- Whitgift Centre, Croydon
- Friary Centre, Guildford
- Southgate Bath Town Centre
- St Austell Town Centre
- C&A Building, Croydon
- Coxtton House, Victoria
- Coxley Park, Watford
- Chiswell Street Brewery
- Aviation, Holburn
- Newlands Nursery, Chichester
- Tesco, Orpington
- Portsmouth Ferry Terminal
- Southampton General Carpark
- Wimbourne Road Car Park, Bounremouth
- North Star, Swindon
- Cheswick Village Centre, Bristol
- New Terminal, Bristol Airport
- PDSA Liverpool
- Springfields, Manchester
- West Yorkshire Play House
- Paradise Street, Liverpool